

## Pitkin County Solid Waste Center Construction & Demolition Waste Guide

1. All of the following construction materials can be recycled at the Solid Waste Center (SWC): **concrete, brick, masonry and porcelain, asphalt, dimensional lumber and pallets, organic material, rock and dirt, scrap metal, cardboard.**
2. Materials should be sorted at the job site since the SWC cannot separate mixed loads. Roll-offs intended for recycling must only contain a single material. For example, a concrete dumpster with wood and cardboard will be rejected for recycling and charged as trash. If self-hauling in a truck or trailer, mixed materials may be placed into a single load and separated by hand.

### Construction Trash

- Construction trash includes non-recyclable materials such as: drywall, insulation, roofing shingles, carpeting, painted wood, and any other items not specifically listed as a recoverable material below. These items will all be sent to landfill so they can be mixed together in the same trash container.

### Recoverable Materials

#### Concrete, Brick, Masonry & Porcelain

- Concrete from building pads, driveways and road construction. Porcelain fixtures like toilets and bathtubs as well as brick, adobe block and clay/porcelain tiles can also be included in loads of concrete.
- Separate snowmelt tubing and wire mesh backing where feasible. Rebar is accepted but keep exposed rebar to <1 foot pieces. Prices are differentiated between clean concrete and dirty (including rebar, mesh or snowmelt tubing).

#### Asphalt

- Asphalt from driveways, road construction or other uses. The amount of dirt should be minimized.

#### Dimensional Lumber/Pallets

- Includes dimensional lumber (Ex: 2x4, 2x6) and pallets only. Small amounts of metal fasteners such as nails and brackets are acceptable. Composite (plywood, OSB, TimberStrand), treated (decking, fencing), painted or stained wood are not recyclable and should not be placed in a wood recycling container.

#### Scrap Metal

- All metal types are recyclable and they do not need to be separated between ferrous/non-ferrous.

#### Cardboard

- Cardboard packaging of any type is recyclable. Ideally flatten for more efficient collection and transport and prevent it from getting wet as much as possible.

#### Organic Material, Rock & Dirt

- Branches, leaves and grass from landscaping are compostable. Branches should be separated from leaves and grass.
- Loads containing dirt (some rock/gravel OK) are considered “screenable soil” and loads containing mostly natural rock (some dirt OK) are considered “crushable rock.”

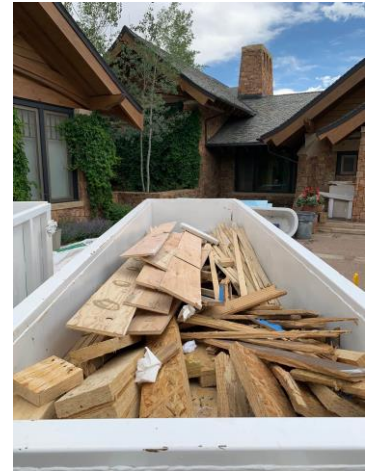
## Dimensional Lumber/Pallets Examples

**YES**



Both loads are clean dimensional lumber only so they are acceptable for recycling.

**NO**



Both loads are contaminated with general trash and they contain a significant amount of non-recyclable wood so they would be rejected and sent to the trash.

## Concrete, Brick, Masonry & Porcelain Examples

